



# Azure Multi-Factor Enrollment

## Table of Contents

1. Overview.....	2
2. Procedure.....	3
3. Glossary/Definition of Terms .....	5
4. Appendices.....	5
4.1. Install and Enroll the Microsoft Authenticator App.....	5



## 1. Overview

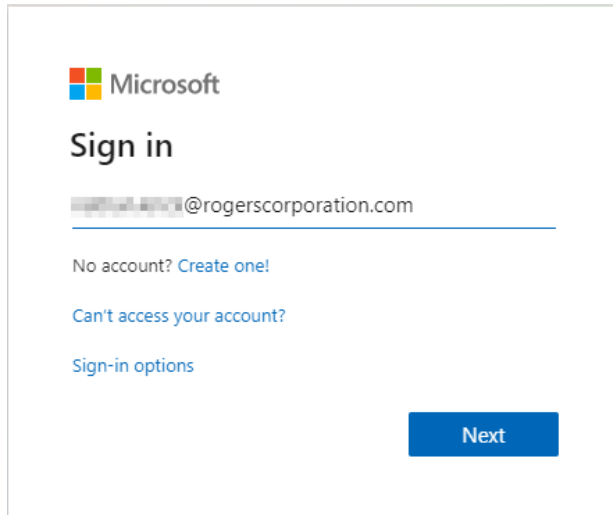
Use this guide to find instructions for how to enroll for Azure Multi-Factor Authentication. The appendix contains instructions about how to install and Enroll the Microsoft Authenticator Application.



## 2. Procedure

2.1. From a Rogers computer, go to <https://aka.ms/mfasetup>

2.2. Log in using your Rogers e-mail address

A screenshot of the Microsoft sign-in page. At the top left is the Microsoft logo. Below it, the text 'Sign in' is displayed. A text input field contains a blurred email address followed by '@rogerscorporation.com'. Below the input field are three links: 'No account? Create one!', 'Can't access your account?', and 'Sign-in options'. At the bottom right is a blue button labeled 'Next'.

2.3. Select "Work or school account" if prompted

2.4. Type your computer/AD/Office365 password



Sign in with your organizational account

A sign-in form for an organizational account. It features two input fields: the top one contains a blurred email address followed by '@rogerscorporation.com', and the bottom one contains a blurred password with a small eye icon to its right for toggling visibility.

Sign in



2.5. Select "Authentication phone" and enter your cell phone country and number.

Optionally, if you installed the Microsoft Authenticator App on your phone (information in Appendix), select "Authenticator app or Token" and click "Set up Authenticator app"

Click Save when you are done.

## Additional security verification

When you sign in with your password, you are also required to respond from a registered device. This makes it harder for a hacker to sign in with just a stolen password. [View video to know how to secure your account](#)

what's your preferred option?

We'll use this verification option by default.

Text code to my authentication p

how would you like to respond?

Set up one or more of these options. [Learn more](#)

<input checked="" type="checkbox"/> Authentication phone	United States (+1)	
<input type="checkbox"/> Office phone	Select your country or region	Extension
<input type="checkbox"/> Alternate authentication phone	Select your country or region	
<input checked="" type="checkbox"/> Authenticator app or Token	<a href="#">Set up Authenticator app</a>	

Authenticator app - [Delete](#)

restore multi-factor authentication on previously trusted devices

[Restore](#)

[Save](#) [cancel](#)

### 3. Glossary/Definition of Terms

### 4. Appendices

#### 4.1. Install and Enroll the Microsoft Authenticator App

4.1.1. Follow the instructions in the MFA enrollment (copied below) to enroll the Microsoft Authenticator app.

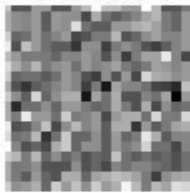
**Note: The below image is just an example of what will appear on the MFA Enrollment Website when you click the option to Enroll the Microsoft Authenticator Application.**

**DO NOT ATTEMPT TO SCAN THE QR CODE FROM THE IMAGE BELOW.**

#### Configure mobile app

Complete the following steps to configure your mobile app.

1. Install the Microsoft authenticator app for [Windows Phone](#), [Android](#) or [iOS](#).
2. In the app, add an account and choose "Work or school account".
3. Scan the image below.



[Configure app without notifications](#)

If you are unable to scan the image, enter the following information in your app.

Code: 

Url: <https://mobileappcommunicator.auth.microsoft.com/mac/MobileAppCommunicator.svc/>

If the app displays a six-digit code, choose "Next".

Next

cancel